



**HobbyFisher
P220**

**HobbyFisher
P150**



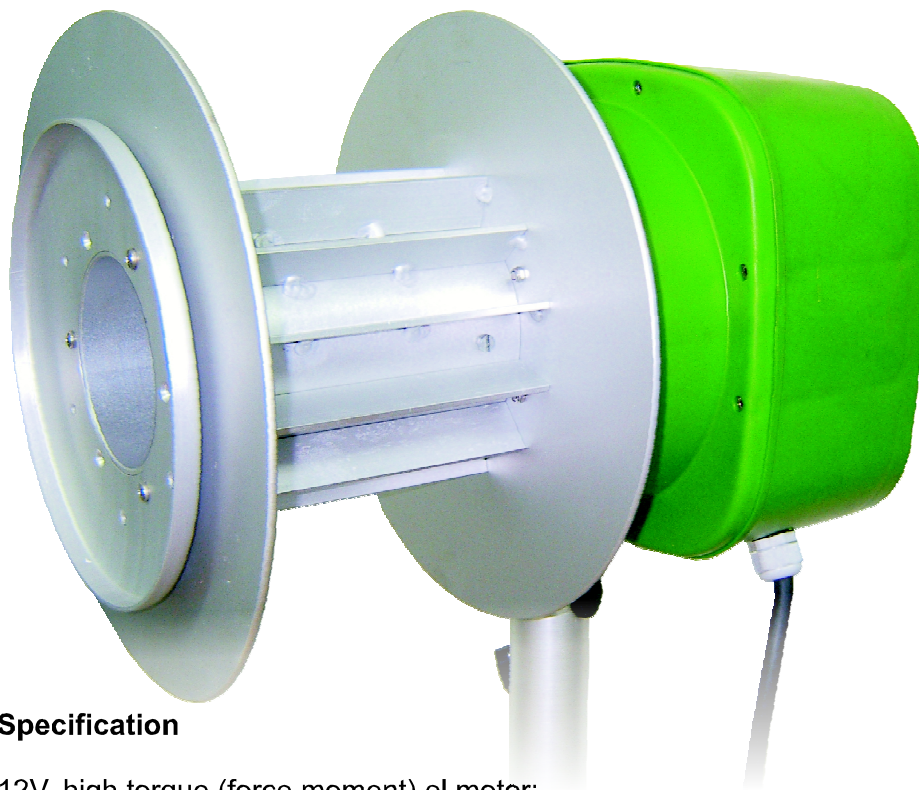




E150 HobbyFisher

Peculiarities:

Sea water resistant materials;
Light weight – only 18kg;
Easy to take away;
Patent pending.



Specification

12V, high torque (force moment) el.motor;
Adjustable speed 0-60m/min;
Lifting capacity 150kg.



P220 HobbyFisher

Description

The winch consists of a low noise, 4 stroke, high quality petrol Honda GX 25 engine, connected to a transmission (gear box) via a “connecting piece” to obtain correct ratio. The connection is patented. Material used is : plastic (polyethylene) to withstand $\pm 60^{\circ}\text{C}$; anodised sea water resistant aluminium and stainless steel. All connecting parts (bolts, nuts and etc.) are made of stainless steel. Recommended fuel for the engine is unleaded 95 octane petrol.



Technical data

Lifting capacity:
0-220kg;
Inhauling speed:
0-30m/min, stepless;
Weight: 12kg;
An average duration
of the full tank:
approximately 1,5
working hours;
Dimensions of the
winch:
the cover-Ø310mm;
sheaves – Ø240mm;
length – 320mm.

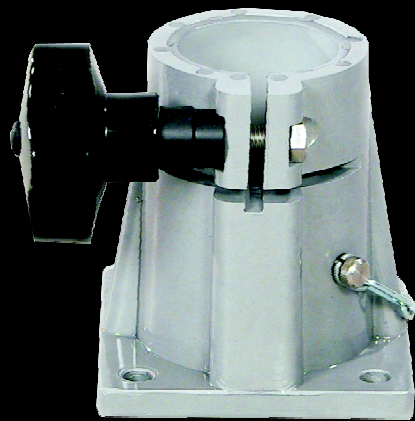
Mounting:

You need to screw the
boat stand to your
boat. The winch (12kg)
you can easily take out
of the boat and bring it
home after the fishing.
There is a standard or
flat mount possibility.

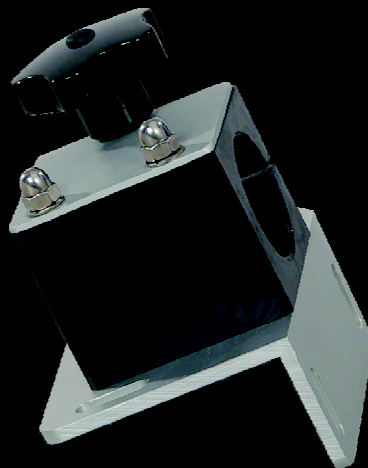


ACCESSORIES

Flat mount boat stand

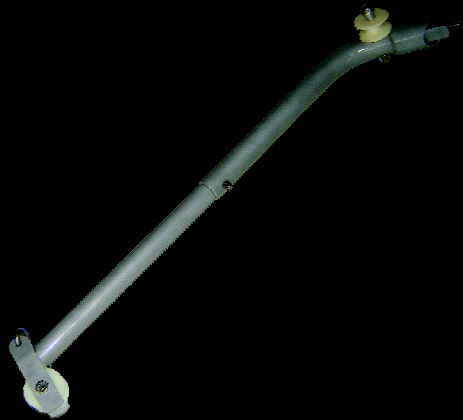


Standart boat stand



ACCESSORIES

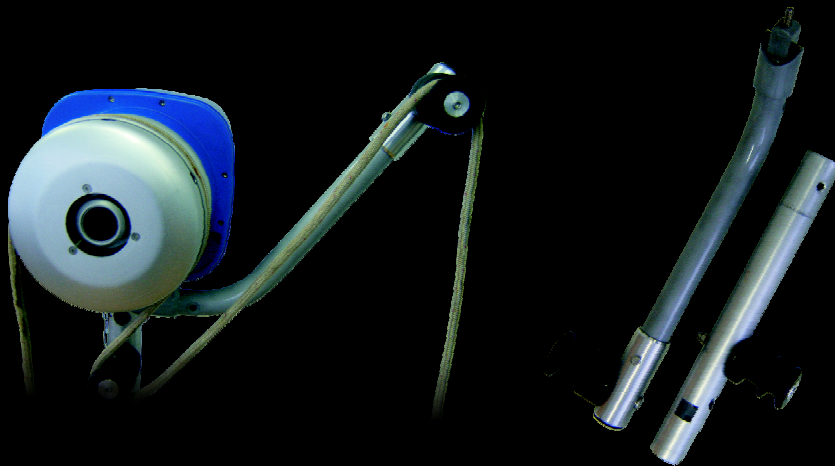
The bar for crab fishing



Guide

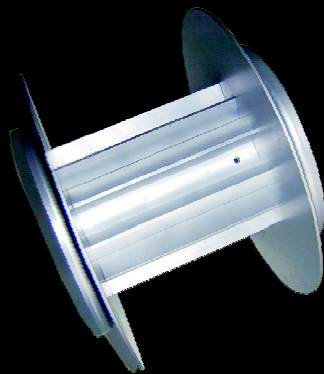


Shorter and stronger crab bar



TOOLS

Wider drum 200mm



P220 will lift 220kg;
E150 will lift 150kg.

A new line wheel



P220 will lift 150kg;
E150 will lift 100kg.

A line net wheel



P220 will lift 220kg;
E150 will lift 150kg.

The rope wheel



P220 will lift 300kg;
E150 will lift 200kg.

**VIDEO ABOUT
HOBBYFISHER
P220** →

**VIDEO ABOUT
HOBBYFISHER
E150** →



NOTES





UAB ABF LT
Laisvės 216, Mažeikiai LT-89305
Tel./fax: 8 443 30694
www.abft.lt
info@abf.lt
Lithuania

Find HobbyFisher on **ebay**.co.uk